

Please rate this document after reviewing at the bottom of this page.

INSPECTION

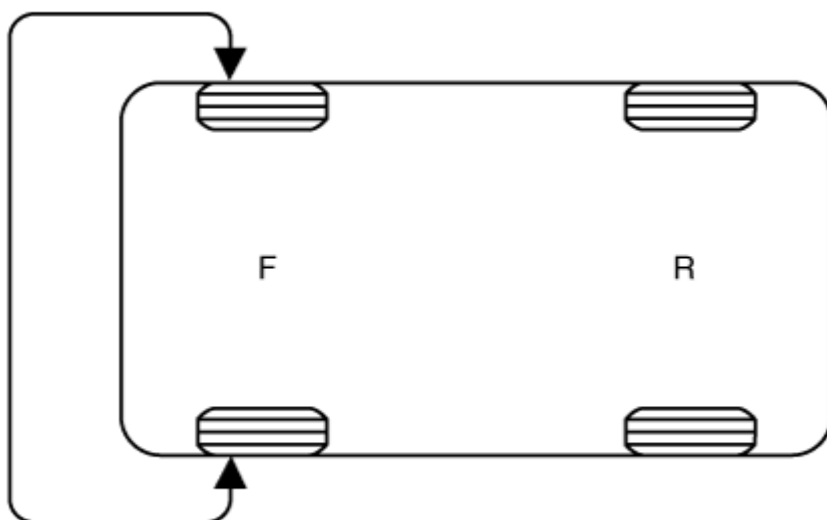
1. Check the tire pressure.
17(inch) : 245 + 7.0 kPa (36 + 1 psi)
18(inch) : 245 + 7.0 kPa (36 + 1 psi)
19(inch) : 245 + 7.0 kPa (36 + 1 psi)

Tire Rotation

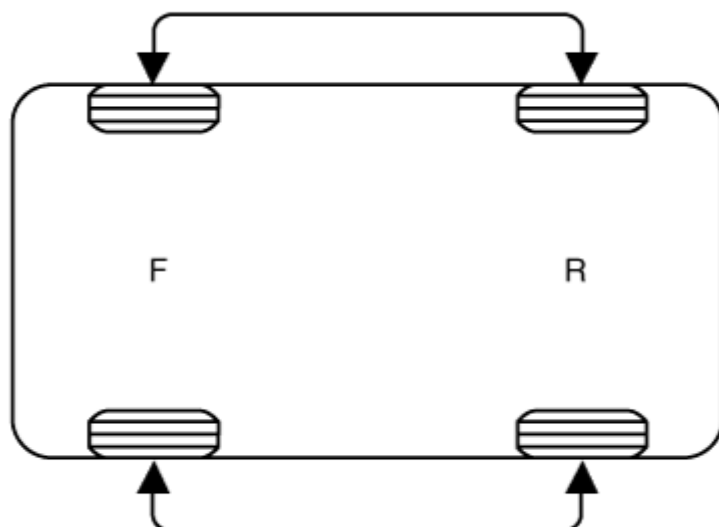
Checking For Pull And Wander

If the steering pulls to one side, rotate the tires according to the following wheel rotation procedure.

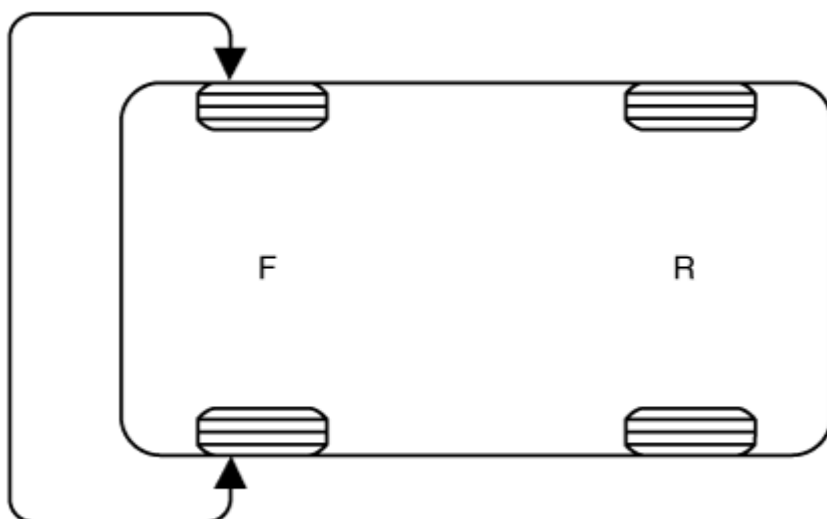
1. Rotate the front right and front left tires, and perform a road test in order to confirm vehicle stability.



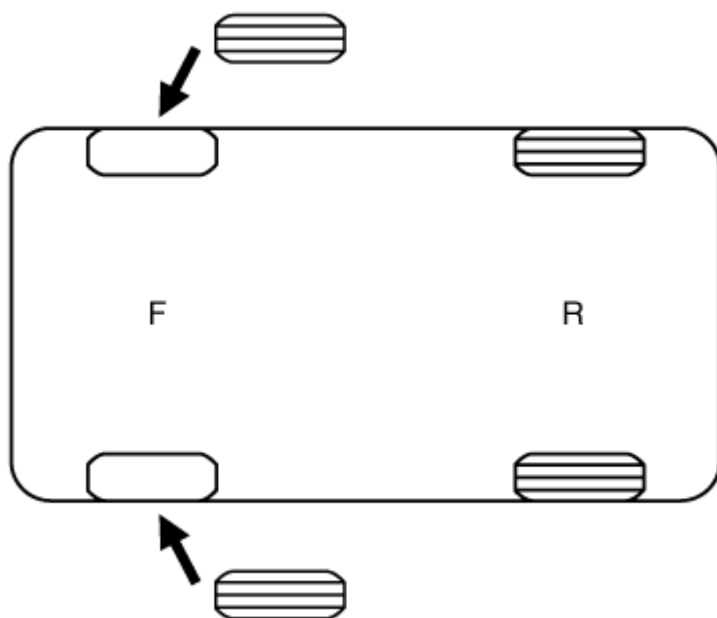
2. If the steering pulls to the opposite side, rotate the front and rear tires, and perform a road test again.



3. If the steering continues to pull to one side, rotate the front right and left tires again, and perform a road test. English



4. If the steering continues to pull to the opposite side, replace the front wheels with new ones.



Tire Wear

CAUTION

- Using tires and wheels of other than the recommended sizes could cause unusual handling characteristics and poor vehicle control, resulting in a serious accident.

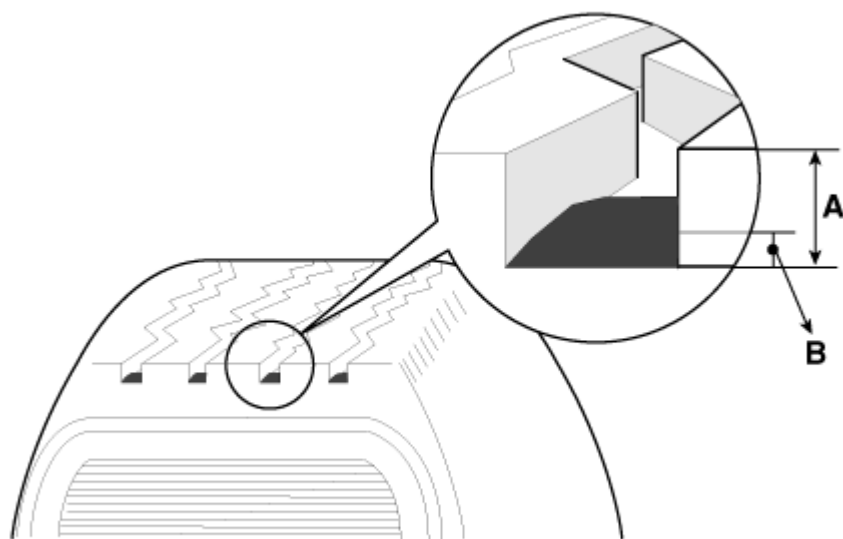
1. Measure the tread depth of the tires.

Tread depth [limit] : 1.6 mm (0.0630 in.)

2. If the remaining tread depth (A) is less than the limit, replace the tire.

NOTICE

When the tread depth of the tires is less than 1.6 mm(0.0630 in), the wear indicators (B) will appear.



*** Thanks for your cooperation for the more quality. Please surely rate this document before closing.**